

## Assembly tutorial: Intel D201GLY2 + Morex3310 enclosure

The following components are used:

- Morex 3310 enclosure with integrated PSU
- Intel D201GLY2
- 2,5" PATA HDD + 2,5" to 3,5" adapter cable
- DDR2 1024MB.

First of all, the front panel gets removed from the enclosure:



... and the enclosure gets opened:



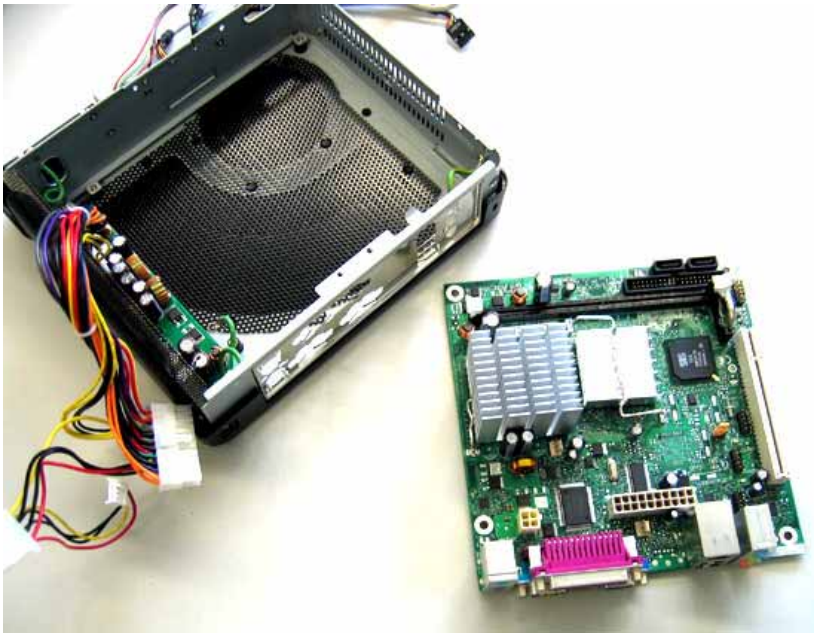
The back panel is installed at its place:



CARTFT.COM

Shop for mobile  
PC- and GPS-Solutions

Power Up Your Car



Then the motherboard is set oblique into the enclosure:



It must be considered, that the ports (parallel and LAN) fit into the back panel aperture. Afterwards the motherboard can be pushed into the enclosure carefully:



**CARTFT.COM**  
Shop for mobile  
PC- and GPS-Solutions

Power Up Your Car



It's tight in there, so it could be that the motherboard grates at the wall of the enclosure with its edge:



After that the motherboard gets screwed on. The included ATX cable with P4 connector gets connected and gets laid correspondingly:



**CARTFT.COM**  
Shop for mobile  
PC- and GPS-Solutions

Power Up Your Car



The front panel connectors get lead through the aperture of the enclosure:



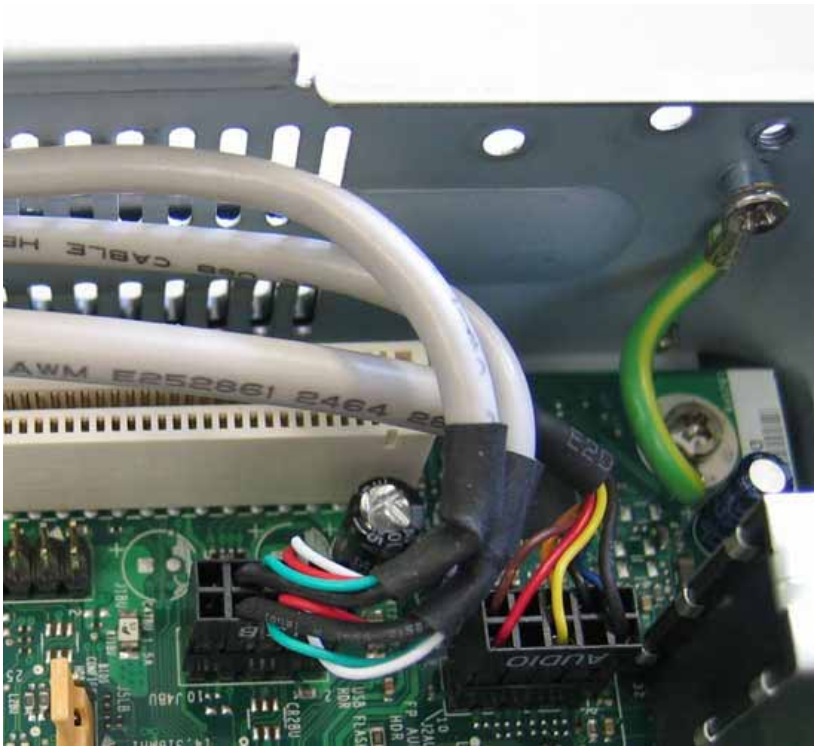
USB and audio front connectors get plugged onto the motherboard:



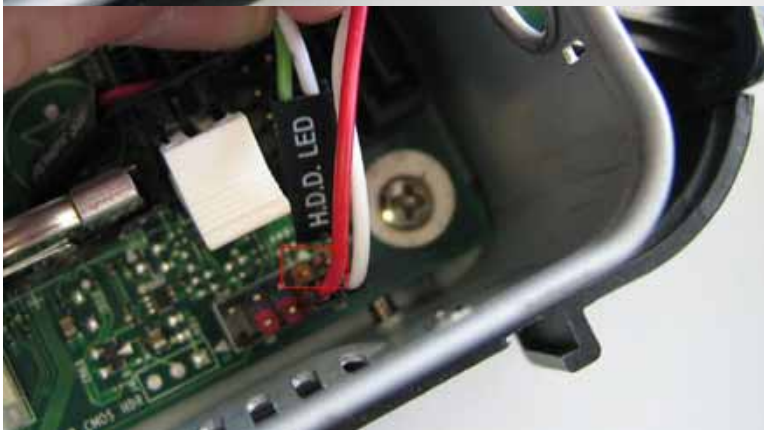
**CARTFT.COM**

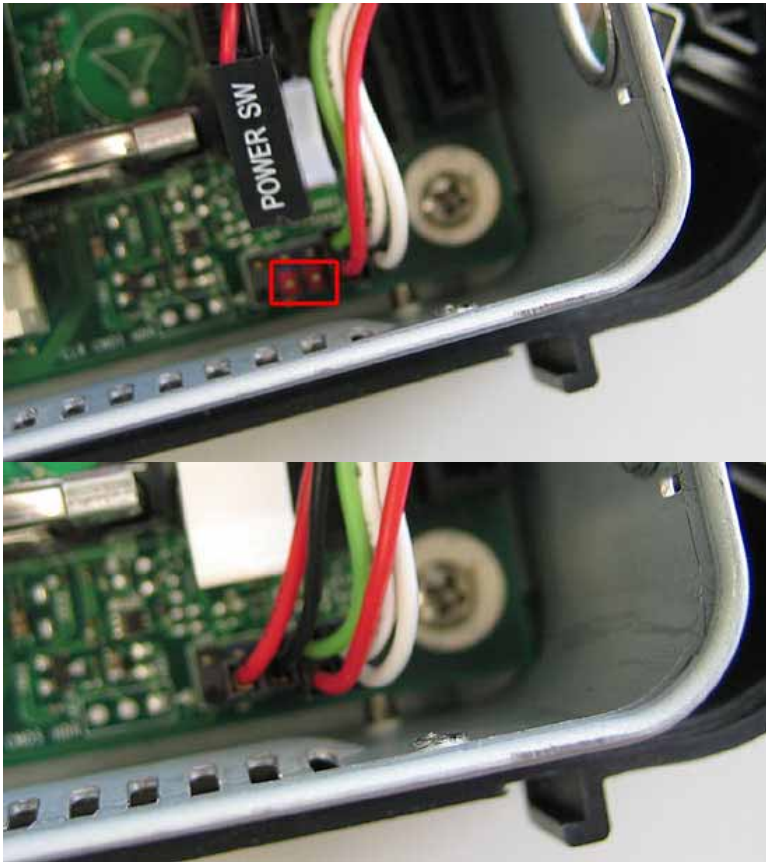
Shop for mobile  
PC- and GPS-Solutions

Power Up Your Car



The front panel is attached as follows:

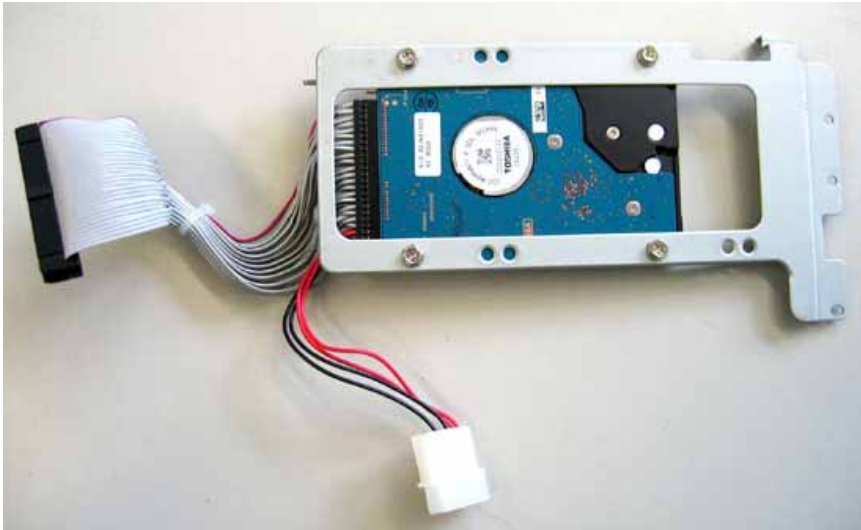




The memory gets installed:



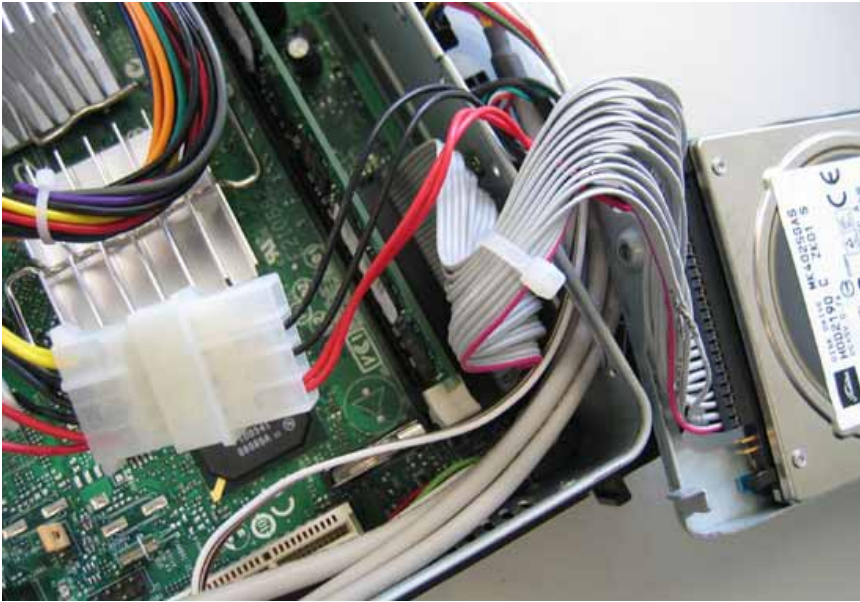
The HDD is screwed on at the enclosed mounting unit:



The 2,5" to 3,5" connector adapter is plugged like shown at the photo:



Afterwards the IDE cable is plugged into the IDE port and the Molex jack is connected to the HDD power cable:



Now the mounting unit is inserted at its original place again...



... and it gets screwed at the enclosure:





Finally the enclosure gets closed, screwed on and the front panel aperture gets plugged in again – Finished!

